



2015

OWNERS'

PROJECT

EXCELLENCE

AWARDS



October 29, 2015, 5 - 9 PM

Promenade by Turnip Rose

1570 Scenic Avenue, Costa Mesa, CA

**Western Council of
Construction Consumers**

1731 Howe Avenue, #613

Sacramento, CA 95825

(916) 599-8020 vann@wccc.org

www.wccc.org

Programs Director: Valerie Largin

Thank you to our Awards Judges:

Andy Wiktorowicz, Tom Broz, Phil Kirby,

Larry Eisenberg, Peter Watts,

Ray Polidoro, John Otoshi

Event Photographer: Melanie Nelson

Guitarist: Darin French

Printer: Alpha Printing

Owners' Project Excellence Awards

recognize improvement and excellence in design, engineering and construction of quality, cost-effective projects. Projects submitted demonstrate effective execution; strategies to meet challenges and improve the process; and successful management of relationships between owner, contractors and service providers. New construction or renovation must have been substantially completed in 2014.

Western Council believes "outstanding performance" can only be achieved when accompanied by superior safety. So projects with poor safety performance are not considered.

PROJECT AWARD STATUS DESCRIPTIONS:

Chairman's Award: This unique project meets all criteria and stands out as best of the year.

Distinguished: Project achieved all objective criteria of schedule, budget, quality and aesthetics with extraordinary safety record.

Exceptional: Project achieved a substantial number of the objective criteria.

Outstanding: achieved a significant number of criteria with noteworthy accomplishments.

Significant: achieved unique or significant objectives.

Notable: Not all criteria were met, but the project has noteworthy elements.

DISTINCTION AWARDS: Innovative Project Solutions and Sustainability Excellence



As our name suggests, construction projects are the main business of our organization. Finding ways to execute these projects safely, on time, and cost effectively is our collective mission. Recognizing the creativity and innovation that is transforming the industry instructs and encourages us along a path of excellence.

Our **Owners' Project Excellence Awards Program** honors projects and those on the front lines of execution, who dedicate their talent and energy to finding better ways to add value to capital programs. During challenging economic times, it is especially important to honor those who maintain the highest standards of our industry.

Nominations were solicited from **WESTERN COUNCIL Membership** for outstanding projects completed in 2014. Submittals were evaluated, by our experienced judging team.

In this 19th year of our project awards program, we are again encouraged by the projects submitted - new construction and renovation, buildings, utilities, and infrastructure. Projects honored are representative of the high standards of the **WESTERN COUNCIL Membership**. As you see and hear about them, we hope you find inspiration for your future projects. That is one reason for this program - to educate, inspire and improve the construction industry.

In addition to project awards we present distinction awards for **Sustainability Excellence** achieved and **Innovative Solutions** applied in these projects.

A common theme in this year's projects is teamwork, collaboration, added value, and creative solutions to project challenges. This trend in our industry is encouraged by Western Council, and bodes well for future projects. We hope members are thinking about projects to submit from 2015. Not yet a member? This is the perfect time to join!

Thank you for joining us in honoring these projects.

**Andy Wiktorowicz P. E.,
EXECUTIVE DIRECTOR**



Anaheim Regional Transportation Intermodal Center



The Anaheim Regional Transportation Intermodal Center (ARTIC), an iconic gateway to Orange County and its major tourism/entertainment destinations, combines the heritage of 19th century grand train stations with the size, scale and complexity of today's modern airport terminals. The boldly designed 67,000 square foot, 16-acre landmark facility is the first LEED® Platinum transit station design in the world, and co-locates rail, shuttle and bus transportation. ARTIC project elements encompass a railroad bridge, pedestrian and baggage tunnel, state-of-the-art rail platforms, a pedestrian concourse bridge, a bus terminal, and parking for 1,100 vehicles. ARTIC also features restaurants, retail shops, event space, a public plaza, and lighting that can be seen for miles.

Owner: City of Anaheim

Designer: Hellmuth, Obata + Kassabaum (HOK)

Contractor: Clark Construction

Construction Manager: STV

Engineer: Thornton Tomasetti

Geotechnical Eng: Diaz • Yourman & Associates

Mechanical & Electrical Engineer : Buro Happold

Public Space Design & Landscape Architecture:
SWA Group

Lighting Design: Horton Lees Brogdon

Community Relations & Public Involvement:
Arrellano Associates

Commissioning Agent: 3QC, Inc.

Communications & Security:

Faith Group LLC

Wayfinding Signage & Graphics:

Elbert Perkins Design

Buildings - New

Budget: \$190 million

Capital Cost: \$188.8 million

Construction Start: Sept. 2012

Completion: Dec. 2014

Safety Record: Zero incidents,
no lost time injuries or safety
complaints

CHAIRMAN'S AWARD



Innovative Project Solutions Award



Sustainability Excellence Award

George Peabody Elementary School Modernization and New Multipurpose Building



Located in San Francisco's Inner Richmond neighborhood, the George Peabody Elementary School project included modernization of three classroom and administration buildings, totaling 16,000 square feet; and new construction of a 5,000 sf multipurpose building, kindergarten addition, and playground structure.

This school is the smallest footprint site in the District. The project team diligently navigated the waters of working on an occupied site — sharing the only existing play area with students. Despite challenges, the successful project was delivered nearly two months early, and under budget — providing the students and staff with a safer, more innovative school campus with the necessities it previously lacked.

Owner: San Francisco Unified School District —
Facilities Design and Construction

Other Stakeholders: California Department of
General Services, Division of the State Architect

Architect/Engineer: Meek, Noll & Tam
JV Architects

Construction Manager: Vanir Construction
Management, Inc.

Contractor: BMH Construction, Inc.

Buildings - New

Budget: \$7,198,000

Final Cost: \$7,149,674

Start: Sept.10, 2013

Completion: Nov. 30, 2014

Safety Record:

Zero Recordable Incidents;
Zero Lost Time Injuries

St. Paul the Apostle New Learning Center and Gymnasium



The New Learning Center and Gymnasium Project was a historic undertaking for St. Paul the Apostle Parish, in cooperation with the Archdiocese of Los Angeles. The excitement surrounding this project was evident in the community — with the budget funded almost entirely by charitable donations.

Replacing an existing 10,000 square-foot middle school building, the new facility includes 36,000 square feet of new construction built adjacent to active school and worship facilities. It is a two-story, steel frame structure that houses nine classrooms, two music rooms, a media center, office space, and the gymnasium. Additional site improvements include driveway widening and site repave.

Owner: St. Paul the Apostle Parish

Other Stakeholders: Archdiocese of Los Angeles; St. Paul the Apostle School

Architect/Engineer: Jeffery M. Kalban and Associates

Construction Manager: Vanir Construction Management, Inc.

Constructor: Benchmark Construction, Inc. (A Subsidiary of Morley Builders Inc.)

Buildings - New

Budget: \$20.5 million

Final Cost: \$19.1 million

Start: June 14, 2013

Completion: Aug. 29, 2014

Safety Record:

Zero Recordable Incidents;
Zero Lost Time Injuries

DISTINGUISHED PROJECT

Las Colinas Detention and Reentry Facility



Las Colinas Detention and Reentry Facility is undergoing a two-phase construction project to design and build a 464,000 square-foot campus on a 45-acre site. With phase one now complete, the grounds have 19 buildings, including: 832-rated beds housing facility, security administration, visitation, release, intake and transfer facilities, laundry, food services, medical services, educational classrooms, an energy plant, underground fuel tank, backup generators, maintenance shops, and a 180-stall parking lot.

Completing this first phase of construction lays the groundwork for continued success as they forge ahead in the second phase of this significant undertaking.

Owner: County of San Diego Department of General Services

Other Stakeholder: San Diego County Sheriff's Department

Architect/Engineer: KMD Architects (Lead); HMC Architects (Secondary)

Construction Manager: Vanir Construction Management, Inc.

Program Manager: CGL Companies

Constructor: Balfour Beatty Construction (Design – Builder)

MEP Engineer: Glumac

Structural Engineer: DCI Engineers

Civil Engineer: Bureau Veritas

Buildings - New

Budget: \$162 million

Capital Cost: \$161.9 million

Start: July 3, 2012

Completion : June 30, 2014

Safety Record:

Zero Recordable Incidents;

Zero Lost Time Injuries



Porterville Developmental Center New Main Kitchen and Administration Building



EXCEPTIONAL PROJECT

Located at the southeast corner of the Porterville Developmental Center campus, the 29,000 square-foot New Main Kitchen Facility houses both a kitchen and administration area.

The kitchen provides cook/chill food production — up to 4,500 meals per day — for the entire campus population and satellite facilities. The administration area, which provides a central location for staff to direct food production operations, includes offices, meeting space, support facilities, and a 50-seat conference room.

The project received LEED Gold certification from the U.S. Green Building Council, exceeding the design goal of Silver certification.

Owner: California Dept. of General Services, Real Estate Services Division, Project Management Branch

Other Stakeholders: Dept. of Developmental Services, Developmental Centers Division, Facilities Planning and Support Section; department of Developmental Services, Porterville Developmental Center

Architect/Engineer: Huntsman Architectural Group

Construction Manager: Vanir Construction Management, Inc.

Constructor: Seals/Biehle, Inc.

Structural Engineer: Degenkolb Engineers

Civil Engineer: Sandis Humber Jones

MEP Engineer: Glumac

Buildings - New

Budget: \$15,471,750

Final Cost: \$15,028,847

Start: July 23, 2012

Completion: Jan. 31, 2014

Safety Record:

OSHA Total Recordable Injury Rate: 0.59

OSHA Lost Time Injury Rate: 1.69



Sustainability Excellence Award

LADWP Headworks Reservoir East



Los Angeles Department of Water and Power (LADWP) has completed construction of Headworks Reservoir East (HRE), half of a buried 110-million gallon potable water storage facility, at the former Headworks Spreading Grounds site. When joined by the west half, Headworks reservoirs will be the largest buried potable water storage facility in the world. It replaces water storage from Silver Lake and Ivanhoe Reservoirs, which were taken out of service to comply with the Long Term 2 Enhanced Surface Water Treatment Rule, enacted by U. S. Environmental Protection Agency (EPA) to improve drinking water quality.

There were a number of challenges, including design and construction of a concrete reservoir this size on a site with a high potential for subsurface liquefaction, minimization and remediation of cracking in mass concrete, and a regulatory compliance deadline.

Owner: Los Angeles Dept. of Water and Power

Designer: Los Angeles Dept. of water and Power

Construction Managers: Los Angeles Dept. of Water and Power / WOL

Prime Contractor: Webcor | Obayashi | Lyles a Joint Venture (WOL)

Principal Geotechnical Engineer: AMEC

Utilities - New

Budget: \$97.4 million

Cost: \$111.4 million

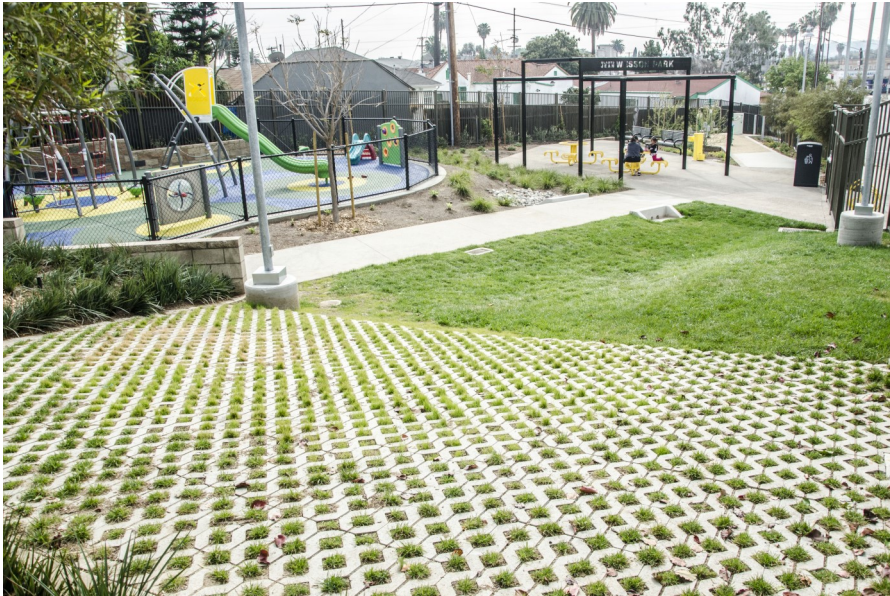
Start: Nov. 2011

Completion: Oct. 2014

Safety Record:

Zero lost workday incidents during 424,532 project man-hours

Gladys Jean Wesson Park



Green spaces are in short supply in the sprawling, often concrete covered landscape of Los Angeles, particularly in underserved neighborhoods. Los Angeles Neighborhood Initiative partnered with neighbors, the community, and Council President Herb Wesson to bring a park with much-needed amenities to this historic West Adams neighborhood. The project is a true community collaboration effort that demonstrates the power of local partnership. Boasting a one-of-a-kind shade structure, with seating options, along with play and exercise equipment, drought tolerant plants, and lush green grass, this park is a cherished place of respite in this urban and historic neighborhood.

Owner: Los Angeles Neighborhood Initiative

Other Stakeholders: City of Los Angeles Council District 10; City of Los Angeles Dept. of Recreation and Parks

Architect/Engineer: Gruen Associates

Construction Manager: Berg & Associates

Builder: Access Pacific, Inc.

Infrastructure - New

Budget: \$500,275

Final Cost: \$500,275

Start: June 24, 2014

Substantially Complete:

Dec. 11, 2014

Safety Record: No accidents and no lost time.



Innovative Project Solutions Award

SIGNIFICANT PROJECT

West Adams Heights Park



Located prominently on Normandie Avenue in Los Angeles, the park serves as gateway to this historic neighborhood and invites the community to exercise, relax, play and find serenity. The West Adams Heights Park transformed a formerly vacant, overgrown lot into a multi-functional park featuring a unique 'front porch' style shade structure, exercise equipment, play equipment, and drought tolerant landscaping.

By partnering with the community to design a park complementing the surrounding neighborhood's Craftsman-period architecture, Los Angeles Neighborhood Initiative delivered an amenity-rich and inviting green space much needed in this park-poor area.

Owner: Los Angeles Neighborhood Initiative

Other Stakeholders: City of Los Angeles Council District 10; City of Los Angeles Dept. of Recreation and Parks

Architect/Engineer: Shared Spaces

Construction Manager: Berg & Associates

Builder: Access Pacific, Inc.

Infrastructure - New

Budget: \$359,627

Final Cost: \$359,627

Start: May 21, 2014

Substantially Complete:

Dec. 6, 2014

Safety Record: No accidents and no lost time.

Innovative Project Solutions Award



**Thank you to our
GOLD
GALA SPONSORS:**

**Vanir Construction
Management, Inc.**

**Webcor
Obayashi
Lyles
a Joint Venture**

ACCESS PACIFIC

General Contractor
755 E. Washington Blvd.
Pasadena CA 91104

Please Contact Esteban Torres
(626) 235-8866



Providing Construction Management
Services in California for 35 Years

www.bergcm.com

Los Angeles Neighborhood Initiative • Council District 10 • Gruen Associates • Shared Spaces • Access Pacific

Congratulations Award Winners!



WEST ADAMS HEIGHTS PARK

GLADYS JEAN WESSON PARK

The Los Angeles Department of Water and Power thanks the
Western Council of Construction Consumers for honoring

Headworks Reservoir East

with the Outstanding Project Achievement Award in the 2015 Owners' Project
Excellence Awards Program Category: Utilities – New

It is a privilege to be part of the
2015 Owners' Project Excellence Awards Program



Headworks Reservoir East is a 55 million gallon covered reservoir designed to replace a portion of the operational storage provided by Silver Lake and Ivanhoe open reservoirs. Upon completion of Headworks Reservoir, Silver Lake and Ivanhoe will continue to be maintained as non-potable water bodies for the benefit of the community.

The 43-acre Headworks Spreading Grounds adjacent to the Los Angeles River, between the City of Burbank and Griffith Park, will feature:

- Two buried concrete reservoirs covered with two to three feet of soil and native vegetation;
- A 4-megawatt hydroelectric power plant;
- A flow regulating station with a flow capacity of 250 cubic feet per second; and
- LADWP and the U.S. Army Corps of Engineers are in a partnership to design and construct the “Headworks Ecosystem Restoration Project” which would include riparian wetlands in a park like setting and passive recreational opportunities.