

# Project Controls SUMMIT

**January 26, 2016**



**900 S. Fremont Avenue  
Alhambra, CA 91803**



Founded in 1972, **Western Council of Construction Consumers** serves as a forum for those involved in commercial, institutional and industrial construction, to address those issues common to the design, engineering and construction industry.

For the second year, we present this **Project Controls SUMMIT** focused on key principles that influence your ability to effectively and successfully meet your project, financial, and organization goals. The rich agenda includes topics of interest to a wide variety of industry sectors and professionals. Owners and industry professionals will include example projects, and share experiences, lessons learned, project controls issues, and effective means and methods — all in a way to help you see how to implement them successfully.

Whatever your role in the process, you will gain insights to institute more effective project controls for your projects going forward. Welcome!

**Andrew Wiktorowicz**

Executive Director  
Western Council of Construction Consumers

**Valerie Largin**

Programs Director and SUMMIT Organizer  
Western Council of Construction Consumers

## Thank You To Our Sponsors:

### LUNCH SPONSOR:



### PLATINUM SPONSOR:



### BREAKFAST SPONSOR:



### PLATINUM SPONSOR:



### PRINT SPONSOR: KITCHELL

### SILVER SPONSOR: FAITHFUL+GOULD

**Thank you to our Host:**  **CENTER OF EXCELLENCE**  
LA County Public Works



Join in ...

Western Council is dedicated to strengthening, serving, and promoting your organization. Whether you are a public or private Owner, Contractor, Subcontractor, Professional Service Provider, or Vendor, you will benefit from Council membership and participation.

When your firm or agency joins, **all** of your employees become members — eligible to enjoy **member-only rates**, for our educational programs, which, equip them to provide you with valuable information to assist with in-house professional development; improved safety, operations and maintenance; and quality, cost-effective construction. We involve your in-house talent in program planning, and listen to your needs for topics and training.

Members may host and/or champion programs, such as Round Tables, as well as serve on planning teams and industry or interest committees.

**Only Members may submit for Western Council Owners' Project Excellence Awards**, recognizing outstanding performance in design, engineering and construction. Join now and submit your projects substantially completed in 2015!

Members enjoy **discount rates** on ads & advertorials in Council Publications, and may submit White Papers to post.

Member firms get a **Free** link to their website from [www.wccc.org](http://www.wccc.org).

Check the Website for other benefits and opportunities, and applications. Join now; or renew for 2016.

**Benefit from the Western Council Experience!**

**QUESTIONS?**

(916) 599-8020  
vann@wccc.org

# SUMMIT AGENDA

## AM

- 8:00 Registration & Networking**
- 8:30 Commencement**  
**Thank you to Sponsors & SUMMIT Logistics:**  
Andy Wiktorowicz, Exec. Director, WCCC  
**Welcome to Center of Excellence:**  
Massood Effekhari, L. A. Co. DPW
- 8:45 3 Strike Approach**  
Charlie Brown, Siemens
- 9:30 Break** (10 minutes)
- 9:40 Is Your Project Healthy? - 5 Things Owners Should Ask Their Scheduler**  
Wendy Cohen & John Armstrong, Kitchell
- 10:25 Contracting for the Means of Project Control**  
Mark Stapke, Stapke Law LLC
- 11:10 Pull Planning and Project Controls**  
Mark von Leffern, Hill International, Inc.
- 11:45 LUNCH** (1 Hour)

## PM

- 12:45 Preplanning = Success: It's not as Difficult as You Think**  
Dhaval Gajjar, Performance Based Studies Research Group, Del E. Webb School of Construction, Arizona State University
- 1:45 Break** (10 minutes)
- 1:55 Estimating Controls and Managing Your Contingency Risk**  
Paul Lewis, Chad Chapman, and John Pidgeon, Faithful+Gould
- 3:15 Closing Remarks & Information**
- 3:30 Adjourn**

*Updates after printing will be Announced at the SUMMIT.*



# Thank you to our 2016 Project Controls SUMMIT Presenters

Presenters added  
after printing will  
be introduced at  
the SUMMIT.



**Massood Eftekhari** RE  
Deputy Director  
L. A. Co. Dept. of  
Public Works

Massood manages the county's \$3 billion on-going capital improvement projects, and oversees divisions responsible for development, design, and construction of County buildings. He also manages Architectural Engineering Division, responsible for contract procurement, inspection, and architectural, civil, structural, mechanical, electrical, and landscape design.

He has also managed the comprehensive Water Resources Branch, a leader in providing sustainable water supplies and healthy watersheds while reducing flood risk for our communities.

Prior to joining Los Angeles County 31 years ago, Massood worked for Caltrans.



**Charlie Brown**  
Director of  
Solutions  
Excellence  
Siemens Building  
Technologies

Charlie is responsible for Strategic initiatives and productivity programs in Siemens' construction projects business. During his 27 year tenure, he has held numerous positions, including project, operations and business management. He currently leads a group of project controls specialists, who monitor and control the latest Building Technology division projects across the Americas.

Under his leadership, Siemens Building Technologies instituted a tiered approach to managing and controlling projects, enabling Building technologies revenue to outpace headcount growth while improving customer satisfaction.



**Wendy Cohen**  
Regional Vice Pres.  
Southern CA  
Kitchell

Wendy brings 20+ years of experience in planning, development and construction to the company's Southern California practice, providing an array of program and construction management services to owners and project teams.

She has held roles in all aspects of the construction industry including: general contractor, construction manager, consultant, and owner.

Wendy is a California native with a strong background in senior living, K-12 education and healthcare, and . She is committed to creating and leading high-performance teams that deliver exceptional outcomes.



**John Armstrong**  
Scheduling Engineer  
Kitchell

John has 8+ years in construction with a proven record of improving financial returns on increasingly complex and risky projects. He has prepared and maintained complex CPM/ Primavera P6 schedules for projects exceeding \$1 billion, while also training and developing project engineers to meet similar responsibilities. John has led large teams of project engineers and schedulers (upwards of 45 individuals) responsible for pre-construction activities, cost engineering and reporting, scheduling, and change management. He has successfully implemented corporate policies for all project management facets, including scheduling, change order negotiations, and value engineering, for both small and Fortune 500 construction firms.



**Mark Stapke**  
Partner  
Stapke Law LLC

With 32+ years of experience, Mark is a seasoned construction and real estate trial lawyer, winning multiple jury trials and arbitrations, and resolving more claims favorably for clients at mediation, including some of the largest project disputes in California, resulting in \$50 million+ recovered for clients. His practice focuses on claims avoidance training for public and private owners, time-related and defect claims, bond claims, advice on the contracting process, and administrative proceedings.

Mark is General Counsel to the WCCC Board of Directors, an arbitrator and a Judge Pro Tem with the Superior Court of the State of California, and was selected as one of the 2013 top 400 construction lawyers in the U.S.



**Mark von Leffern**  
PMP, PSP, EVP  
Project Control  
Manager  
Hill International

Mark has 15+ years of experience in project management, strategic planning, planning and scheduling, resource optimization, cost analysis, risk management and proposal development for a multitude of public and private projects. These include: refineries, rail, infrastructure, major transmission and distribution lines, substations, systems engineering and integration, software development, aircraft modernization and technology advancement. Mark is a PCM supporting two urban tunneling projects for LA Metro.

He is currently Executive Director of the 2016 AACE International Western Winter Workshop - a joint Southern CA and Bay Area sections conference.



**Chad Chapman,**  
CPE, LEED AP  
Technical Director -  
Construction  
Intelligence  
Faithful+Gould

Chad has 20+ years' construction industry experience and is TD for construction intelligence and cost estimating services in Minneapolis.

Chad, and the cost estimating team, are responsible for providing cost estimates for locations across North America.

He is committed to his professional development in the cost estimating field, having earned his Certified Professional Estimator accreditation through American Society of Professional Estimators (ASPE).

Chad is a past president of ASPE Viking Chapter, and an instructor of estimating technology at Dunwoody College of Technology in Minneapolis.



**Dhaval Gajjar, M.S.**  
Research Assistant,  
CM PhD Candidate  
School of  
Sustainability and Built  
Environment

Third generation construction professional, he is a researcher at Performance Based Studies Research Group (PBSRG), which specializes in Best Value Procurement and Risk Minimization using Performance Metrics, at Arizona State University's Del E. Webb School of Construction. Dhaval leads research for roofing manufacturer's procurement, performance and risk minimization program, and is PM for TI and facility expansion projects. He has authored conference proceedings and journals on construction performance and best value concepts. He won the Karen Marcel Award, Utilities Council Award, Outstanding Service Award, is President of IFMA ASU Student Chapter, and mentors for Obama Scholar Program.



**John Pidgeon**  
AVS, MRICS, LEED AP  
Chief Estimator  
Faithful+Gould

John has 25+ years of experience in the construction industry with expertise in cost management, cost estimating, value engineering, audit solutions, and contract management. He is experienced in establishing project budgets; change order, claims and contractual forms management; cash flow projection and management; as well as reconciliation of project costs, including construction accounting management. John has evaluated several contract price adjustment claims, provided recommendations to owners based on contractual documentation and supported arbitration and negotiation of claims settlements.

John currently leads project controls efforts at Flint Hills Resources.



**Paul Lewis, MRICS**  
Technical Director –  
Risk Management  
Faithful+Gould

Paul has 25+ years of experience in managing risk and cost on major projects, and is currently TD — RM in Phoenix.

Paul has extensive experience in the development and implementation of proactive risk management in a wide variety of business sectors, where assessing the optimum solution through a structured risk management approach has facilitated the client's decision-making process.

Additionally, he has extensive experience in the implementation of effective project controls - estimating, budgeting, cost planning, bid preparation, procurement, bid analysis, change control, cost management, project close out, claims and dispute resolution.



**Andy Wiktorowicz**  
Executive Director  
Western Council  
of Construction  
Consumers

With a B.S. in Physics from Illinois Institute of Technology, Andy has 40+ years as a practicing engineer, registered in both Control Systems and Manufacturing Engineering in California. He co-authored the first edition of *Instrument Engineers Handbook*, and has written numerous articles and lectured on *Control Systems Engineering*.

As a specialized consultant, he implemented innovative projects and rescued troubled ones using creative technical and management solutions. His firm, Unigen has participated in 50+ projects from Hamburg to Singapore, for clients including: Shell International, TRW, PPG, TWA, UOP, Mobil Oil, Southern California Gas, and Hunt Wesson Foods.



California • New York • Australia  
Certified DVBE/SDVOSB

## BETTER PROJECT CONTROL THROUGH TECHNOLOGY PARTNERING



ORACLE PRIMAVERA AND PMWEB SOFTWARE  
HOSTING & PROJECT CONTROLS MANAGED SERVICES  
CERTIFIED IMPLEMENTATION SPECIALISTS  
PROJECTSTATUS - JAVA FREE P6 COLLABORATION  
& RISK TOOL  
CERTIFIED ORACLE PRIMAVERA TRAINING  
PROFESSIONAL SERVICES SUPPORT



[www.drmcnatty.com](http://www.drmcnatty.com) [info@drmcnatty.com](mailto:info@drmcnatty.com)  
877.367.7990



## Get PMP Certified!

### Project Management Training Academy Study Group Workshop

This low-cost program provides experienced assistance and guidance to help you **pass the PMP Exam** and learn best practice tools to **become a great Project Manager**. With the **teleconference model**, you can call in from *anywhere* for the three lunch-hour sessions per week for 22 weeks.

**100% first-try pass rate** -- Over 12 years we've never had anyone not pass the exam on the first try after successfully completing this program. Most students increased their income, and all are now in better jobs and have improved their capability to be successful on the job. **PMTA program provides this and more:**

- PMI Project Management Training via Project Management Body of Knowledge via the new PMBOK Guide 5<sup>th</sup> Edition
- Tools/methods to successfully answer PMP questions & pass exam 1st time
- Student-only website with training aids, study guides & sample/examples
- Assistance with your PMP application
- "Tricks of the Trade" in the study process & memorization techniques
- Affordable Registration fee and purchase of 1 textbook
- A peer study environment & answers to your questions
- Certificate for 36+ Hours of organized study (up to 66 hrs)
- Project Management Framework & Processes
- Free practice exams at program completion

**Orientation:  
February 4th  
Class begins:  
February 23rd**

► **Get a discounted rate through Western Council** (Reg. \$400)

**WCCC Members: \$300    Non-Members: \$350**

Check the Council website for full details: [www.wccc.org](http://www.wccc.org)





## Take advantage of these and other Western Council benefits:

- Networking with Industry Professionals
- Expanded Professional Development
- SUMMITS & other large regional events
- Targeted Committees
- Best Practices
- Cooperative Workforce Development
- Craft Training programs that meet your needs
- Host Round Tables and Seminars
- Sponsorship, Visibility, Recognition & Publication opportunities
- Owners' Project Excellence Awards
- Innovative Industry Solutions Awards
- Labor Force Demand Projections
- National Council Representation
- Western Council publications
- Vendor and Training Affiliate Discounts **and much more . . .**

**2016 brings a wealth of professional development programs**

**Join in planning programs or staff training**

**Give us your topic and/or presenter suggestions**

**Host or Sponsor a program in your region or facility**

**Participate in programs and series**

**Contact us for details: (916) 599-8020 [vann@wccc.org](mailto:vann@wccc.org)**

**The Council is growing  
and we are expanding our Board.  
Get involved and find success with Western Council:**

**Join, Renew, or “Come Back” NOW!**

**Check online for membership & event details: [www.wccc.org](http://www.wccc.org)**

**Thank you for attending the Project Controls SUMMIT!**



# *Program/Project & Construction Management*

Experience in exceeding expectations for over 65 years

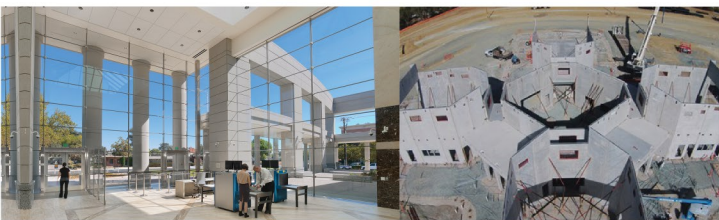
## *Together, Building Value Everyday*

### SERVICES



- ▶ Program/Project & Construction Management
- ▶ Construction Management at Risk
- ▶ Design-Build
- ▶ Engineering and Architectural Services
- ▶ Facility Management

### MARKET SEGMENTS



- ▶ Justice & Corrections
- ▶ Higher Education
- ▶ Civic/Municipal
- ▶ Healthcare
- ▶ K-12 Education
- ▶ Arts & Culture
- ▶ Student Housing

#### SACRAMENTO

2750 Gateway Oaks Drive, Suite 300  
Sacramento, CA 95833  
P:916.648.9700

#### COSTA MESA

940 South Coast Drive, Suite 115  
Costa Mesa, CA 92626  
P:714.278.4499

#### SAN DIEGO

4719 Viewridge Avenue, Suite 130  
San Diego, CA 92123  
P:619.378.1965

**LEARN MORE AT [WWW.KITCHELL.COM](http://WWW.KITCHELL.COM)**